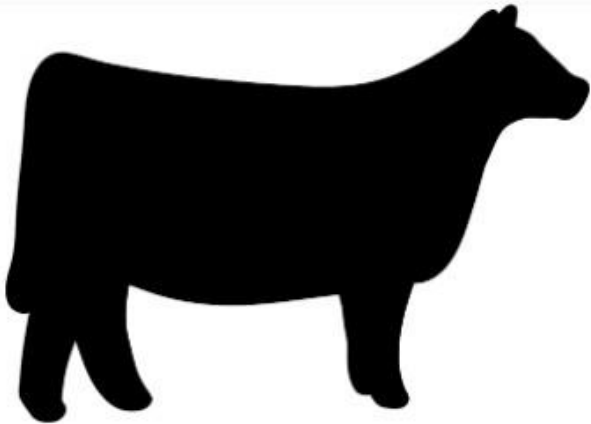


# Carroll County Beef Department Orientation

June 2020



# Animal Ownership

- ▶ Market Steers - must be owned by January 1st of the current year.
- ▶ Breeding Heifers - must be owned by July 1st of the current year. Please note if you are exhibiting a breeding heifer the association registration papers, must be signed by the breed secretary and stamped by July 1st in order to be eligible to exhibit the heifer in the current year.
- ▶ Commercial Heifers - must be owned by July 1st of the current year. Note that your commercial heifer will need to have the proper 4-H paperwork (Livestock Registration Form) and a Maryland 4-H Commercial Heifer ear tag by July 1st of the current year to be eligible to show. Most Commercial Heifers will be tagged at the county's beef weigh-in.

# Livestock Registration Form

- ▶ The Maryland 4-H Program requires that each 4-H Market Steer or Commercial Heifer (non-registered heifer) must complete a Livestock Registration Form.
- ▶ If you are housing your animals at a location that is not your home address you need to include the location of where you're 4-H Beef Project is being housed.
- ▶ There is also a box at the top of the form, where you will need to check off if you are weighing a market steer or a commercial heifer. If you plan on tagging a market steer and a commercial heifer, you will need to complete 2 separate forms (one for each project (1 for steer and 1 for commercial heifer)).

# University of Maryland Extension (UME) 4-H Code of Animal Science Ethics

- ▶ This form is on the back of the Livestock Registration Form
- ▶ The form must be signed by the 4Her and Parent
- ▶ Read and know what you are signing

“4-H members enrolled in animal science projects (e.g., beef, camelids, dairy, dog, goat, horse, poultry, rabbit, sheep, small pet, and swine) shall, at all times, conduct themselves with honesty and good sportsmanship, including while with their projects and at all 4-H animal science activities and events.

Their conduct should always reflect the highest standards of honor and dignity to promote the advancement of 4-H and its animal science program. 4-H members, as well as parents, UME volunteers and others working with them, are under an affirmative responsibility to do more than avoid improper conduct or questionable acts; and their conduct and values must serve as a positive influence on others...”

# Animal Husbandry Quality Assurance (AHQA) Program

- ▶ Maryland 4-H members are required to participate in the AHQA online program to ensure projects are being managed using best management practices in caring, grooming and showing in safe and ethical ways.
- ▶ The program is designed to be completed one time per 4-H age division (junior, intermediate and senior).
- ▶ This needs to be completed by Friday, July 24<sup>th</sup>. The program can be found at: <https://ahqa.umd.edu/>

# Fair Requirements

- ▶ To ensure you are moving in the correct direction with your project, make sure you read your fair rules as soon as they are available.
- ▶ Many fairs, including the Carroll County Fair, will leave their department rules posted online for the previous year and by spring of the current year's new rules for your fair should be available.
- ▶ If you are a first time 4-H member showing talk with you club leader, beef superintendent or Extension Educator on the major rules and guidelines you need to be following.

# Fair Entry System

- ▶ To be eligible to exhibit at fairs you are responsible for pre-entering your steer/heifer(s) at the fair.
- ▶ Most fairs use an online entry system and your county Extension Office will release the information when the entry system is opened.

# Health Papers

- ▶ The Maryland Department of Agriculture requires that all livestock entering fairgrounds in the state have a Certificate of Veterinary Inspection (CVI or Health Papers).
- ▶ A veterinarian will need to visit the farm to inspect your animals for good health.
- ▶ When the health papers are completed by your veterinarian you will receive a copy. Keep them with your records and they must accompany your beef project to all shows.
- ▶ If you are showing in Maryland the health papers are valid for 120 days and you must complete a health check on your cattle before entering the fair.
- ▶ This will be verified by filling out the back of your health papers prior to each fair or show.



# Rate of Gain (ROG) (Market Animals Only)

- ▶ Maryland 4-H has a set ROG that your steer must gain in order to be eligible for the majority of fairs and livestock sales throughout the state. Rate of gain for Maryland 4-H is set at 2.0lbs and for calculating ROG you will use the following formula:
  - ▶ Calculate Number of Days from initial Weigh-in through the Final Weigh-in at County or State Fair (when calculating your days include day of both weigh-ins)
  - ▶ Subtract initial weigh-in weight from final weigh-in weight
  - ▶ Divide the total weight gained by number of days between weigh-ins to get the daily ROG for the market steer.
- ▶ EXAMPLE - Initial Weigh-in - January 4th and the market steer weighed 783lbs, Final Weigh-in - July 30th and the market steer weighs 1,422lbs
  - ▶ Number of Days between weigh-ins = 208 days
  - ▶ Market steer gained = 639lbs (End weight - beginning weight = pounds gained)
  - ▶ Final ROG =  $639\text{lbs} / 208 \text{ days} = 3.07\text{lbs per day}$

# Project Records

- ▶ Part of raising your 4-H Beef project is the importance of the records you keep on your project.
- ▶ By using the Maryland 4-H Market Livestock Project Records or the Maryland 4-H Breeding Livestock Project Records, will help in aiding you keep appropriate records and give thought to what you are learning throughout the year.

Project record forms can be found at: <https://extension.umd.edu/carroll-county/4-h-youth/beef-project>

# Livestock Sale Requirements (Market Animals)

- ▶ All Requirements must be met in order to be eligible to see your Market Animal in the sale.
  - ▶ You must be enrolled in 4-H livestock project.
  - ▶ You must complete an approved 4-H project record, or FFA record book.
  - ▶ You meet sale weight requirements for your project species, for beef, your market animal must weigh between 1,110 and 1,500 lbs.
  - ▶ You meet rate of gain requirements for your project species, for beef, your market animal must gain 2 pounds per day between the initial and fair weigh in.
  - ▶ Your animal must grade according to the Livestock Sale Committee's appointed grader.

# Grading/Finish

- ▶ There are 5 key areas where you should check for the amounts of fat and muscle. These are the brisket, flank, twist, rump, and forearm.
- ▶ Here is a helpful video link that walks through how to check the finish of your steer,  
[https://www.google.com/search?q=how+to+check+fat+covering+on+my+steer&rlz=1C1GCEA\\_enUS873US873&oq=how+to+check+fat+covering+on+my+steer&aqs=chrome..69i57j33.8073j0j7&sourceid=chrome&ie=UTF-8&safe=active&ssui=on#kpvalbx=\\_ZT\\_2Xp6fN-TBytMP8LWgoAc22](https://www.google.com/search?q=how+to+check+fat+covering+on+my+steer&rlz=1C1GCEA_enUS873US873&oq=how+to+check+fat+covering+on+my+steer&aqs=chrome..69i57j33.8073j0j7&sourceid=chrome&ie=UTF-8&safe=active&ssui=on#kpvalbx=_ZT_2Xp6fN-TBytMP8LWgoAc22)

# Purebred animals

- ▶ Purebred animals must have registration papers, with the exhibitor's name listed as the sole owner by the ownership deadline.
- ▶ Registration papers must be brought to the Fair and presented to the Committee for verification.
- ▶ The animal must have a tattoo that matches the registration paper before it comes to the Fair.
- ▶ Any animal that does not have a registration paper with matching tattoo will be moved to the crossbred division.

# Feeding your Steer

- ▶ You will want to gradually start the calf on feed. If you buy your steer from a breeder, ask what they are feeding and how much.
- ▶ When he is young, feed one to two pounds of grain and all the grass hay he will clean up.
- ▶ Increase the concentrate a half pound daily until the steer is receiving one pound per 100 pounds body weight (600-pound steer = 6 pounds). This should take a week to 10 days.
- ▶ Then start a gradual increase of two pounds per week until the calf is receiving two pounds of grain per 100 pounds body weight (700-pound steer = 14 pounds).
- ▶ You will want to feed your growing steer about 2 to 3 lbs of feed daily per 100 pounds of body weight.
- ▶ Feed half of the feed in the morning and the remainder at night.
- ▶ Having access to a scale will help you determine his daily rate of gain, it should be at least 2 pounds per day.
- ▶ Your steer should clean up his feed in about 20 to 30 minutes.
- ▶ After the steer has finished eating his grain, give him a flake (2-3 pounds) of good quality grass or grass-legume hay.

# Water

- ▶ Water is essential for the market steer.
- ▶ An adequate supply of clear, fresh water is necessary for good growth and the health of the animal.
- ▶ Although water may not be thought of as a nutrient, it is the most important and cheapest nutrient you can furnish your steer.

# Animal Health

- ▶ What does a healthy animal look like
  - ▶ Bright eyes
  - ▶ Ears up
  - ▶ Eats all their feed
  - ▶ Consistent manure
- ▶ What does a sick animal look like
  - ▶ Ears down
  - ▶ Skips eating
  - ▶ Diarrhea
  - ▶ Temperature above 103; normal is 101.5



# Animal Health

- ▶ Establish a relationship with your veterinarian
- ▶ Make sure your animal has clean water
- ▶ Make sure your animal has clean bedding
- ▶ There should be plenty of air flow and shade
- ▶ Work your animals during the cooler parts of the day.

# Practice

- ▶ It is important to practice with your animal on a regular, consistent basis.
- ▶ You can start by tying your steer, petting and using a comb on them
- ▶ Next move on to washing and blowing, working hair on a daily or every other day basis.
- ▶ Showmanship is next, practice walking your animal with a rope or training halter
- ▶ Then add a show stick and practice moving their feet
- ▶ Practice using a show halter
- ▶ Have a family member, or friend, video you working with your animal so you can see where you can improve.

# Stall setup

- ▶ Things to consider when setting up your stall at the Fair:
  - ▶ Dividers - These will help separate your animals from your neighbor.
  - ▶ Tie pole or gate - Placing a tie pole or gate at the head of your animal will give you a secure place to tie your animal while you are working with him.
  - ▶ Fan and fan pole - This is especially important on hot days
  - ▶ Stall Mat - This will keep your animal from pawing at the bedding, making a hole and getting themselves dirty.
  - ▶ Tie wire - Use a piece of tie wire at the back end of your dividers, under the mulch to keep them from moving when your animal lays against them.
  - ▶ Utensils and Utensil Rack - You will need a mulch fork, straw fork, broom, shovel and rake to keep your bedding clean. A rack will help keep them tidy when not in use.
  - ▶ Neck ties - This will help keep your animals out of each others feed and a safety in case they slip a halter.
  - ▶ Wheelbarrow
  - ▶ Zip ties

# Feed and Water at the Show

- ▶ Bring enough feed for the number of days that you will be at the show, plus a little more for show day fill
- ▶ Feed pan
- ▶ Water bucket
- ▶ Water filter
- ▶ Hay - It is a good idea to bring a couple different types of hay so they have a choice, sometimes animals get picky at the Fair.
- ▶ Feed scoop

# Show Supplies

- ▶ Tack Box
- ▶ Combs
- ▶ Brushes
- ▶ Blower
- ▶ Extension cord
- ▶ Show stick
- ▶ Show halter
- ▶ Exhibitor Number Harness or belt clip
- ▶ Fly Spray
- ▶ Clean Sheen or Conditioning Spray
- ▶ Paper towels

# Wash Rack Supplies

- ▶ Hose
- ▶ Soap
- ▶ Whitening soap - if your animal has whites
- ▶ Scrub brush
- ▶ Curry comb

# Show Clothes

- ▶ Khaki or green pants.
- ▶ White collared shirt, tucked in
- ▶ Neckpiece (green or black)
- ▶ Boots
- ▶ Belt
- ▶ FFA members may wear standard FFA attire.

# Before the Fair

- ▶ Pay close attention to due dates and rules
- ▶ Ask questions.
- ▶ Know your animal: weight, breed, male or female,
- ▶ Work with your animal and make sure it is comfortable with you.
- ▶ Remember to send out your buyers' letters if you plan to sell your animal at the sale.



# At the Fair

- ▶ Stalls should be cleaned throughout the day. Pick up all manure as soon as possible.
- ▶ Limit the number of people in the beef area during the show and sale
- ▶ During a show and sale, wait patiently at your stall for a member of the beef committee. They will tell you when to line up.
- ▶ Keep the aisles clean at all times.
- ▶ Water does not need to be in front of your animal at all times. You should offer a fresh bucket of water to them multiple times throughout the day, more often on hot days.

# In the Show Ring

- ▶ Always follow the direction of the Judge and/or show ring help.
- ▶ For most shows you will enter the ring and line up side by side
- ▶ After the judge previews the animals, he will ask you to walk around the ring and line up head to tail. Follow the judges direction on where to walk.
- ▶ Remember to leave plenty of space between you and your neighbor at all times
- ▶ Use your show stick to scratch your steer on his belly or brisket. Use calm easy strokes, counting 1, 2, 3 between each stroke
- ▶ Try to walk your steer or heifer into position, this is where practice at home is important. Use your show stick to position feet if necessary.
- ▶ Watch for the judge to pull you into your placing
- ▶ Listen and make eye contact with the judge when he is critiquing your steer. Do not leave the ring before the judge is done talking your animal.
- ▶ After the show congratulate your friends and thank the judge.

# Showmanship question

- ▶ During showmanship, the judge may ask you questions about your project.
  - ▶ Name
  - ▶ Steer or Heifer
  - ▶ Breed
  - ▶ Weight
  - ▶ Birthdate/Age
  - ▶ Feed ration and/or amount of daily feed
  - ▶ What do you like best about your animal
  - ▶ What would you change about your animal

# Parts of the Steer

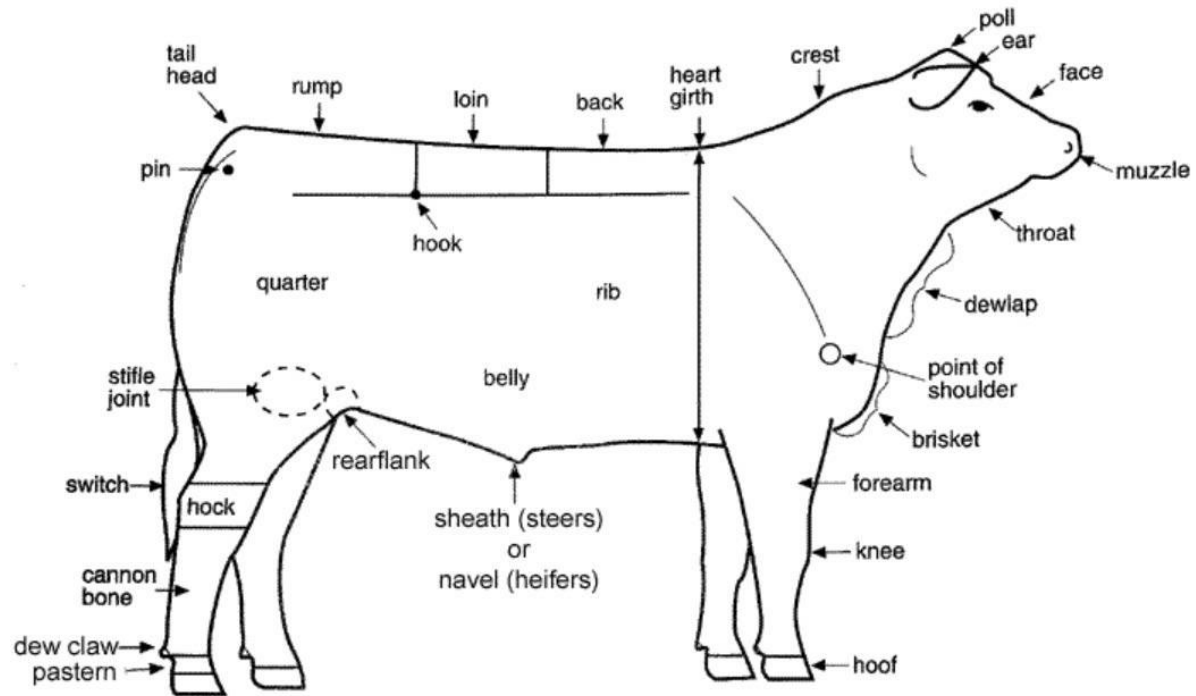
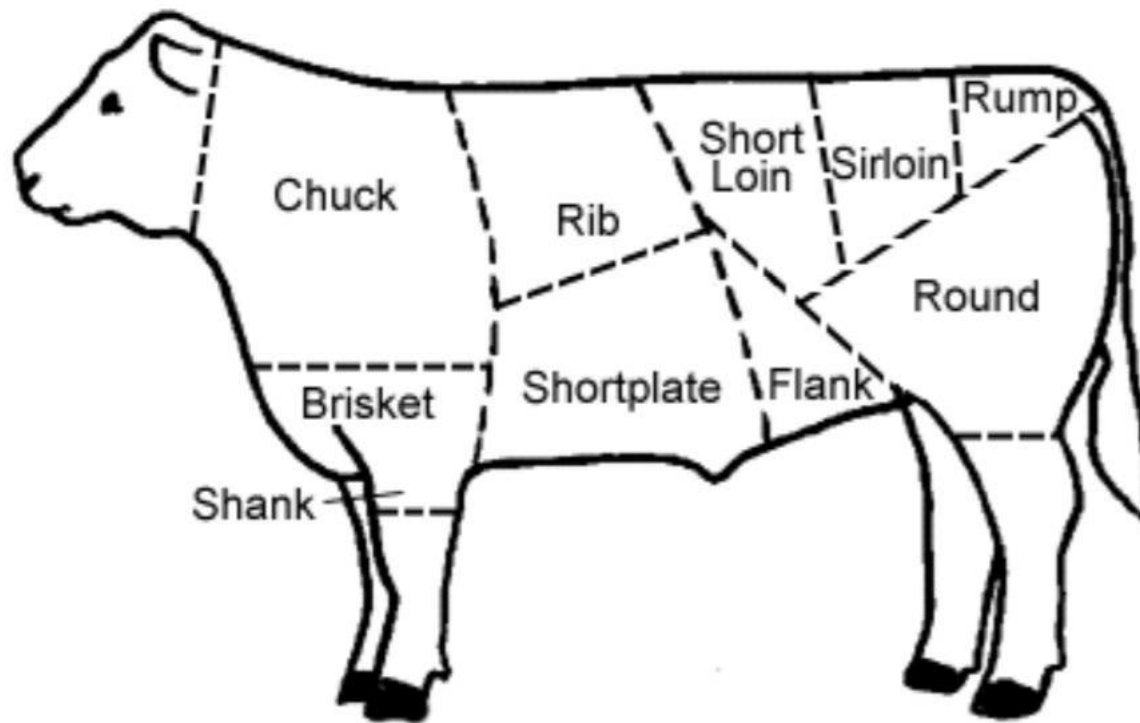


Image Copyright, Ohio State University Extension. Used with permission.

# Wholesale Cuts of Beef

Wholesale Cuts of Beef



# Questions

- ▶ If you have questions, please ask.
- ▶ The Extension Educators, Fair Board Members, and Beef Committee Volunteers are here to help and they want to see you succeed.
- ▶ Remember to have fun!

Don't forget to take the Quiz for credit!!!

<https://form.jotform.com/Bridgewa/CCBeefWorkshop>

Workshop/Quiz needs to be completed by July 24, 2020.