

UNIVERSITY OF  
MARYLAND  
EXTENSION

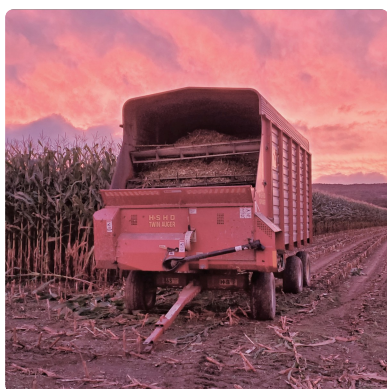
## Garrett County Ag Newsletter



Agriculture & Food Systems

October 2024

### Prepare Now For Your 2025 Nutrient Management Plan



Start planning for the 2025 growing season now. Call the extension office to request your nutrient management plan update this fall. Nutrient management plans can be flexible, so if you are not sure what crops you plan to grow in each field, your plan can include multiple scenarios. Fall is the perfect season to update soil samples from your fields after your crops have been harvested. Soil samples are good for up to three years. The extension office can provide you with the required documents for you to send out your soil samples. As a reminder, be sure to take

yield records throughout the harvest season.

To request a nutrient management plan update and discuss needed information for your plan, call 301-334-6960 or email Andrea at [auphold@umd.edu](mailto:auphold@umd.edu) to plan for 2025.

---

### Tick Problem in Cattle Spreading

The Asian Longhorn Tick was first discovered in the US in 2017 but is now found widespread across most of the mid Atlantic region. Racheal Slattery, University of Maryland Department of Animal Science has been part of a multi-state group doing surveillance on the ticks. Ticks have been found in Allegany County and in West Virginia to the south and west of Garrett County. Melinda Smith with the Garrett County Health Department has been doing tick surveillance in

Garrett County for all types of ticks the past two years. This year Melinda found a couple of the Asian Longhorn Ticks (ALT) in Garrett County. The ALT is interesting in that it can clone itself and produce offspring without mating. In 2020, Rutgers University reported that all the ALT ticks found in the US were female ticks. This cloning ability allows the ticks to increase numbers rapidly when conditions are favorable such as finding a host cow. The ALT tick does not carry Lyme's disease and only a few have been found to carry *Theileria orientalis ikeda* (TOI) which is a pathogen cattle can develop after being bitten by ATL ticks. YOI only cause symptoms in a few percent of the animals with ticks and is usually not fatal. The most significant problem with the ATL tick is that once it infects pastures and cattle the ticks multiply quickly. Often over one million ticks per animal, which can make animals anemic, have poor growth and eventually die if left untreated. Animals get infected from pastures where the ATL are present. The ATL tick is also spread from area to area by wildlife such as white tail deer and bear. ATL ticks can be controlled on livestock with chemicals that are used to control flies such as permectrin and most pour-on fly controls. The problem is that ticks will reinfest the cattle on pastures. Once you have found ticks, farmers will need to have a consistent fly control program and limit animal exposure to pastures that are near or include woodlots. Rotating pasture can also help to control tick numbers. The ticks are most active during the late spring and summer. If you find ticks on your cattle contact the folks on the attached University of Maryland flyer or the Garrett County Extension Office at 301-334-6960.

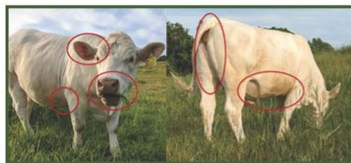


DEPARTMENT OF ANIMAL & AVIAN SCIENCES

UNIVERSITY OF MARYLAND EXTENSION

**CATTLE AND TICKS - HOW, WHERE AND WHAT TO DO**

Where to Look:



How to Look:

- Using your hand, slowly feel in and around the ears, eyes, forehead, and face. Move on to the neck, brisket, behind the front legs and along the belly to the rear flank. Finally, feel around the tail head, down and around the udder, and the length of the tail.
- Be sure to apply some pressure as you run your hand along the animal. Its best to use the back of your hand versus your palm as it will be easier to feel the unusual bumps that may be ticks.
- Don't wear gloves as they can block your ability to feel the ticks, especially smaller ones.

What to do if you find any ticks:

- Remove the tick from the animal (or yourself):
  - Using tweezers or a featherman pliers:
    - Grasp the tick as close to the skin of the animal as possible - we ID the ticks based on their mouthparts so its important to have the head still attached
    - Pull upward with steady even pressure until the tick is detached.
- Place the detached ticks on to the sticky side of some masking or painters tape.
- Place the pieces of tape into a plastic bag with a damp paper towel
- Label the bag with the farm name, address, date and location on the animal where the tick(s) were found, as well as an email or phone number for the lab to contact you -

Please don't freeze



**All collected ticks should be mailed to:**

University of Maryland - Dr. Megan Fritz  
4291 Field House Drive  
Plant Sciences Building Rm 4112  
College Park, MD 20742

Potential Control Methods

- **Chemical Control\*\***
  - a. **Spray, Pour-on or Ear Tag Acaricides (Pesticides used to kill ticks) for Cattle**
    - Spray Examples: Bayer Permethrin II, Starbar E-PRO, Prolate Lintox-HD, Prozap VIP Insect Spray
    - Pour-on Examples: Y-TEX Brute, Y-TEX Gardstar EC, Martin's FLY-BAN, Martin's Permethrin 1.0%, Martin's Permethrin 1.0% Synergized, Ultra Boss, Boss
    - Ear Tag Examples: Gardstar Plus, Y-TEX Python, Cyence Ultra, Max40
  - **Potential Pasture Products**
    - Sevin SL Carbaryl Insecticide - Bayer
    - Paradigm VC - Winfield Solutions, LLC
- \*\*Please make sure to read and follow all label instructions\*\*
- **Environmental Control**
  - **Limit cattle access to wooded areas** - whitetail deer are a large source of exposure
    - If possible, have a short mowed barrier between woods/treelined areas and cattle pastures
  - **Minimize tick habitat** - keep pastures trimmed and brush free as much as possible
  - **Use rotational grazing** - minimize tick exposure by changing up grazing locations for your cattle on a regular basis

**Theileria orientalis ikeda**

- **What is *Theileria orientalis ikeda*?**
    - It's a pathogen cattle can develop after being bitten by ALTs
  - **Most common times of infection?**
    - Sept-Nov and April-June
  - **What is the Incubation Period?**
    - 48-72 hrs after tick attaches
    - 8-48 days to show signs of infection
  - **What are signs in infected cattle?**
    - severe anemia (pale mucosal membranes, jaundice), fever, lethargy - exercise intolerance, lack of appetite, weight loss, severe labored breathing
  - **Fatality Rate?**
    - 3-90% depending on the health, age and reproductive status of the animal - particularly calves and pregnant heifers
- Once infected, there is no cure, the animal will have a chronic infection and be a carrier of the pathogen.**

Questions?

Racheal Slattery  
UMD-Animal and Avian Sciences  
rslat@umd.edu

Resources

- <https://wvstateu.edu/wvsu/media/Outreach/VMCVM-Theileria-summary-1-14-20.pdf>
- <https://pubmed.ncbi.nlm.nih.gov/34197609/>
- [https://www.aphis.usda.gov/animal\\_health/downloads/theileria-orientalis-ikeda-notice.pdf](https://www.aphis.usda.gov/animal_health/downloads/theileria-orientalis-ikeda-notice.pdf)
- [https://vitals.vetmed.vt.edu/content/dam/vitals\\_vetmed\\_vt\\_edu/documents/theileria-summary.pdf](https://vitals.vetmed.vt.edu/content/dam/vitals_vetmed_vt_edu/documents/theileria-summary.pdf)

# Free Mycotoxin Testing Available to Local Farmers

Take advantage of the no-cost Mycotoxin testing to farmers for corn, wheat, oats, rye and other grains. Contact Willie Lantz at the Garrett County Extension Office at 301-334-6960.

Click below to see complete article.



## No Cost Mycotoxin Testing Offered to Maryland Farmers

ANNAPOLIS, MD (September 25, 2024) - The Maryland Department of Agriculture and the University of Maryland Extension is reminding Maryland farmers Mycotoxin (aflatoxin, fumonisin, vomitoxin, etc.) testing is offered at no cost to farmers for corn, wheat, oats, rye and other grains.

[extension.umd.edu](https://extension.umd.edu)

---

## Maryland FSA Reminds Farmers of Drought Assistance



This summer has been extremely dry and hot, with little to no end in sight for the counties of Allegany, Garrett, Washington, and Frederick. Farmers are extremely worried about the D3 (extreme) drought conditions as indicated on the US Drought Monitor (USDM). A drought resulting in devastating crop losses, pasture losses and water restrictions.

Fortunately, the Farm Service Agency (FSA) offers relief for local drought-impacted livestock producers through the Livestock Forage Disaster Program (LFP) and Emergency Assistance for Livestock, Honeybees, and Farm Raised Fish Program (ELAP), the Tree Disaster Assistance Program (TAP), and the Noninsured Disaster Assistance Program (NAP).

LEP provides compensation to eligible livestock producers who have suffered grazing losses for covered livestock and who are also producers of grazed forage crop acreage of native and improved pastureland. The grazing losses must occur on land physically located in a county experiencing a qualifying drought during the normal grazing period. A USDM drought intensity level of D3 at any point during the grazing season triggers producer eligibility for LFP assistance to monthly payments.

ELAP covers losses that are not covered under other disaster assistance programs. It covers losses due to an eligible adverse weather or loss condition including drought. ELAP provides eligible producers with compensation for feed and grazing losses and transportation costs

associated with transporting feed/forage to livestock and livestock to feed. Eligible producers are required to complete a notice of loss and a payment application to their local FSA office no later than January 30, 2025 for 2024 calendar year losses.

Tree Disaster Assistance Program (TAP). If you have trees, bushes, or vines that produce an annual crop for commercial purposes, they can be eligible for assistance. Ornamental, fruit, nut, and Christmas trees are also eligible for TAP. In order to qualify, you must experience a loss greater than 15% of normal mortality.

The Noninsured Disaster Assistance Program (NAP) also can provide assistance for drought loss. Eligible crops are those commercially produced for which crop insurance is not available in the county. In most cases a policy must be purchased beforehand. However, if you are a socially disadvantaged producer, you may still be able to qualify for assistance.

If you are a farmer affected by the drought in Garrett County, please contact the FSA Office at 301-501-5857.

---

## Beef Cattle Nutrition Workshop Offered



The University of Maryland Department of Animal and Avian Sciences together with Cargill, Inc. and Maryland Extension will be holding a Nutrition workshop for all interested cattle producers. The goal of this workshop will be to cover several important areas of beef cattle nutrition. Please see the attached agenda for more information on the topics being covered.

**The cost for this program will be \$40 per person, which will include all materials, refreshments and a hot meal (dinner or lunch).**

**Date and Location:**

Tuesday, Nov. 5th 3-7:30pm: WMREC, [18330 Keedysville Rd, Keedysville, MD](#)

**For more information about the workshop or to register with a credit card, please visit either our Event page: [go.umd.edu/beefnutrition2024](https://go.umd.edu/beefnutrition2024) [[go.umd.edu](https://go.umd.edu)] or our Website:**

**<https://ansc.umd.edu/extension/beef-extension/educational-courses/#series-iv> [[ansc.umd.edu](https://ansc.umd.edu)]**

For any questions, concerns, or to register offline, please don't hesitate to reach out to Racheal Slattery at 301-405-1392.

---

# Fall Manure Transport and Injection Projects Deadline December 15th



## Cost-Share Grants Available for Fall Manure Transport and Injection

ANNAPOLIS, MD (September 16, 2024) - The Maryland Department of Agriculture is reminding farmers that cost-share funding is available to help cover expenses associated with hauling all types of manure to fall-planted crop fields with acceptable soil phosphorus levels.

[news.maryland.gov](https://news.maryland.gov)

Contact the Garrett Soil Conservation District for more details at 301-501-5886

---

## Fall Cover Crop Reminders!



To receive payment for Cover Crops, you must certify your cover crop with the local soil conservation district within one week of planting and by November 12, 2024. Certify late-planted cover crops by November 22, 2024. All follow-up documentation must be submitted to the local SCD by December 2, 2024 to receive payment. Call 301-501-5886 for additional information.

---

## Western Maryland Food Council To Hold Food Conference



The WMFC will be holding a food conference titled "Buying Local Helps All" This is the third food conference held by the WMFC. The conference will be held on November 15th. The conference will be held live at three locations in western Maryland: Garrett College, Allegany College of Maryland (Cumberland) and the Washington County Extension Office. You can also attend the conference virtually via zoom. The conference will feature three speakers in the morning followed by a local discussion of the food system and three speakers in the afternoon followed by a second local discussion. Topics include: food pharmacy programs, restaurant meals program, food access at farmers markets, restaurant connections and local foods to institutions.

The registration fee is \$35 which includes lunch (live locations only). Registration will be live soon. To follow go to the WMFC website at [www.wmfoodcouncil.com](http://www.wmfoodcouncil.com) or call the extension in Garrett County at 301-334-6960.

---

## Fruit Tree & Bush Sale



The Garrett Soil Conservation District will be holding a Fruit Tree and Fruiting Bush Fundraiser Sale again for 2025. Orders are being accepted now through April 1, 2025, but individuals are encouraged to order early because it is not likely the District will be able to get more of many of the varieties once they are sold out. There are several heirlooms this year in addition to more current varieties. All of the trees and bushes have been customized to the Garrett

County climate. They are all super-cold hardy, and many are on enhanced rootstocks designed specifically for increased tree sturdiness, cold hardiness, and drought tolerance. For trees, there are Semi-Dwarf, Short Semi-Dwarf, and Dwarf sizes. Varieties include: Apple, Cherry, Plum, Northern Peach, Pears, Blueberries, Elderberries, Black Raspberries and Red Raspberries.

For more information and to order go to <https://garrettsoilconservation.org>. Funds raised go to support GSCD's outreach and conservation efforts. Pick-up will be mid-April 2025.

---

## Garrett Soil Conservation District Job Opening

[Maryland Department of Agriculture](http://Maryland Department of Agriculture) is hiring a Soil Conservation Associate (Technician) at Garrett Soil Conservation District. Go to <https://jobapscloud.com/MD/> or click on link below to apply.



### SOIL CONSERVATION ASSOCIATE II

We are hiring for SOIL CONSERVATION ASSOCIATE II.

📄 [jobapscloud.com](https://jobapscloud.com)

---

## Statewide Agriculture Newsletters



Newsletters from UME offer informative, researched-based information that the reader can put into practice. Informative articles include crop production, disease information, animal science, and upcoming programs. Take a closer look at the newsletters listed below.

The **Agronomy News** is a statewide newsletter for farmers, consultants, researchers, and educators interested in grain and row crop forage production systems. This newsletter is published once a month during the growing season and will include topics pertinent to agronomic crop production. Subscribers will receive an email with the latest edition.

#### [Agronomy News](#)

The **Fruit & Vegetable News** is a timely publication for the commercial vegetable and fruit industry available electronically from April through October. Published by the University of Maryland Extension Agriculture and Food Systems team.

#### [Vegetable & Fruit News](#)

---

## Update AG Client Contact Information

Please [click here](#) to update your contact information and to stay updated on everything agriculture-related in Garrett County and the tri-state area.

**CONTACT US**



---

## UME Garrett County Agriculture & Food System

William Lantz, Principal Agent

Agriculture & Food System

[wlantz@umd.edu](mailto:wlantz@umd.edu)

**Office Hours:** Monday-Friday

8:00 am - 4:30 pm

Except for Observed Holidays



**[Faculty/Staff Directory](#)**

---



Agriculture & Food Systems

**Email:** [rcvetnic@umd.edu](mailto:rcvetnic@umd.edu)

**Website:** <https://extension.umd.edu/locations/garrett-county>

**Location:** 1916 Maryland Hwy., Suite A, Mt. Lake Park, MD 21550

**Phone:** 301-334-6960

**Office Hours:** M-F 8:30 am-4:30 pm excluding holidays

**Facebook:** <https://www.facebook.com/4HGarrettCoMD>

---

University programs, activities, and facilities are available to all without regard to race, color, sex, gender identity or expression, sexual orientation, marital status, age, national origin, political affiliation, physical or mental disability, religion, protected veteran status, genetic information, personal appearance, or any other legally protected class. If you need a reasonable accommodation to participate in any event or activity, please contact us at least two weeks prior to the event at 301-334-6960.

---



**Roberta Cvetnick**

Roberta is using Smore to create beautiful newsletters