

Ag Notes

Harford County Newsletter

UNIVERSITY OF
MARYLAND
EXTENSION

February 2021

University of
Maryland Extension

Harford County
Agricultural Center

Suite 600
3525 Conowingo Rd.
Street, MD 21154
(410) 638-3255

M—F 8:00 a.m.—4:30 p.m.

Extension.umd.edu/harford-county

facebook.com/HarfordAg

Andrew Kness

Ag Extension Educator

akness@umd.edu

INSIDE THIS ISSUE:

Beginning Farmer Course 2

Winter Meeting Recordings 2

Pesticide Applicator Exams 3

Nutrient Management AIRs 3

Poultry Litter App 3

Value-Added Producer
Grants 4

Additional CFAP Relief 5

Grain Marketing & Crop
Budgets 6

Harford County Agriculture
Symposium 7

Hello, Harford County!



It's been one year since COVID-19 made its appearance in the US, and I don't think any of us expected it to have such a profound impact on our lives—but here we are. I feel like a broken record, but Extension faculty and staff are still teleworking as much as possible, and most programs as you know are still virtual. I look forward to the day I can say that changes, and in the meantime please reach out to me by phone or email if you need me.

I have had several inquiries about the COVID vaccine for essential agricultural workers, which are in tier 1C. As you are probably aware, there is a worldwide shortage of vaccines, making the rollout very slow and frustrating. Many folks have asked what the process will be for farmers and other essential agricultural workers to get vaccinated in Harford County. Here is what we know thus far:

If you haven't already, you need to fill out a "[pre-registration](#)" form. The information you provide in this form will determine which tier you fall under. The form can be accessed from this page: <https://harfordcountyhealth.com/the-covid-19-vaccine-information/>. Based on your tier, Harford County will then contact you to schedule an appointment. They will first reach out to the remaining people in the 1A priority group. Then they will start randomly selecting candidates from the pre-registration list of the 1B group. Based

The Extension office is open by appointment only and will be closed on February 15 for Presidents' Day

on studies showing extra benefit from targeting zip codes at higher risk, they will offer an extra chance for the 25% zip codes with the highest weekly rates of COVID. Group 1C will be receiving invitations after clinics can no longer reach capacity with group 1B; *this may take 4-13 weeks.*

When you are chosen, a link to open appointment slots will be emailed to you (or phone call if you don't have email). **Slots go fast**, so check your email at least twice a day. If you wait for more than a few hours to claim your slot, it could be gone. If you do not claim your slot you go back into the original pool and you don't have any higher priority than before.

When you check your calendar for your first dose, also make sure you can come in 28 days later because that is when your second shot will be scheduled. The CDC says it is OK to get a second dose up to six weeks later, but the data supports the best timing for the second dose to be 28 days after the first.

For more information, visit the Harford County Health Department website at: <https://harfordcountyhealth.com/the-covid-19-vaccine-information/>, or call (410) 838-1500.

Until next time,
-Andy





The Maryland Beginning Farmer Success Course is a ten-week introduction to the foundational topics an aspiring farmer in Maryland should know.

Topics covered will include:

- Business planning
- Marketing
- Crop production
- Livestock husbandry
- Soil health
- Pest management
- Food safety
- Regulations and Certifications

The course will be offered virtually, in a blended at-your-own-pace and live (asynchronous and synchronous) format.

Live sessions will be weekly on Thursday nights, from 6:30 to 7:30 pm, starting with an orientation to the course on Thursday, February 4. The last session will be Thursday, April 8.

Registration for the course is \$40, plus Eventbrite fees. Register at www.go.umd.edu/BFS2021. For more information, contact Neith Little at nlittle@umd.edu or (410) 856-1850.

Agronomy & Vegetable Meeting Recordings

If you were not able to attend our virtual Northern Maryland Field Crops Day or Central Maryland Vegetable Grower's Day programs, recordings are available by request and you can still get your credits for pesticide recertification and nutrient vouchers! Contact Andy Kness (akness@umd.edu, 410-638-3255) or Erika Crowl (ecrowl@umd.edu, 410-887-8090) to request either of the meeting recordings and recertification information. Alternatively, you can fill out this online form for [Northern Maryland Field Crops Day](#) or [Central Maryland Vegetable Grower's Day](#).

If you **do not** need pesticide or nutrient management credits from these meetings, you can just watch the recordings online at the following links:

- [Field Crops Day](#)
- [Vegetable Growers Day](#)

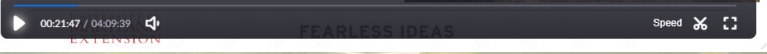
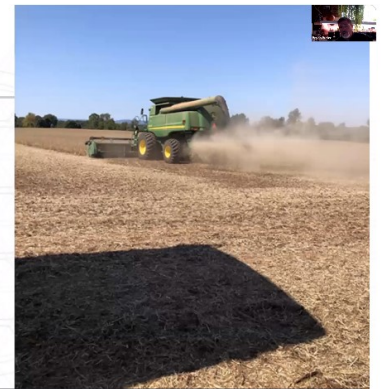
zoom

University of Maryland Extension Winter Agrono... - Shared screen with speaker view

Economics

• Price of Seed (per 140,000 seeds)

- Beltsville: \$75
- Keedysville: \$69
- Upper Marlboro: \$82
- Price of beans at time of harvest: \$11.17/bu



Pesticide Applicator Exam Dates Announced

As COVID-19 is still lurking, Maryland Department of Agriculture has made some changes to their Pesticide Exam dates and University of Maryland Extension will be offering a regional exam on March 11.

For Private Applicators:

Exams will be offered on **February 16, 17, & 18, 2021** from 8:30-11:30 am at MDA in Annapolis. You **MUST** register by February 10, 2021. Register at <https://mdafebruarypesticideexam.eventbrite.com>.

A later exam will be offered on **March 11, 2021** from 8:30-11:30 am at the **Baltimore County Ag Center**. You **MUST** register by March 8, 2021. Register at <https://go.umd.edu/Marchpestexam> or call the Extension office.

Study materials: If you need the Private Pesticide Applicator Core Manual, please contact Andy Kness at akness@umd.edu or (410) 638-3255. The manuals are \$20 each. You may watch an online pre-recorded training prior to the exam at <https://go.umd.edu/applicatortraining>.

For Commercial Applicators:

Exams will be offered on **February 16, 17, & 18, 2021** from 8:30-11:30 am at MDA in Annapolis. Exams will not be offered at Boonsboro or Cambridge this Spring. You **MUST** register by February 10, 2021. Register by calling MDA at (410) 841-5710.

Nutrient Management AIRs

It's that time of the year again! Time to check your mailbox for the Maryland Department of Agriculture's 2020 Annual Implementation Reporting (AIR) Forms. Reporting forms are due to the department by **March 1, 2021** to document nutrient application made during the previous calendar year. The 2020 reporting form is also available for download on the [department's website](#).

New this year, farmers have the option to file their AIRs electronically using the [Maryland OneStop](#) portal. For

guidance on filling out your AIR, please contact your nutrient management consultant or Dwight Dotter at (410) 841-5959.

For assistance completing your AIR, MDA is available to help. Contact Darren Alles at (410) 991-3114.



New Poultry Litter App, "littr."

James Fischer, Delmarva Chicken Association

The Delmarva Chicken Association launched a new, free mobile app, Littr., designed to help growers anywhere on Delmarva who have poultry litter find customers seeking to use it as a valuable fertilizer. DCA developed the app by partnering with the National Fish & Wildlife Foundation, Campbell Foundation for the Environment, the Delmarva Land & Litter Collaborative and Common Logic.

Here are five easy steps to get started selling or buying chicken litter today:

1. Download the Littr. app from Google Play or App Store
2. Register for the app (using lowercase characters) and complete as much information about yourself as you'd like. Remember: the more details you provide, the more likely you'll find customers or suppliers.

3. Start viewing the listings, and create your own filters based on distance from your location, listing type or state.

4. Create your own listing, whether you are a grower, a farmer in need of litter or someone that provides services, such as hauling, clean outs, or custom application.

5. Start connecting by sending a message, marking a listing as a favorite or making a phone call.

To learn more, check out www.littr.io or contact support@littr.io.



littr.

Value-Added Producer Grants

The USDA is now accepting applications through **March 22, 2021** for their [Value-Added Producer Grant Program](#). The Value-Added Producer Grant (VAPG) program helps agricultural producers enter into value-added activities related to the processing and marketing of new products. The goals of this program are to generate new products, create and expand marketing opportunities and increase producer income.

You may receive priority if you are a beginning farmer or rancher, a socially-disadvantaged farmer or rancher, a small or medium-sized farm or ranch structured as a family farm, a farmer or rancher cooperative or are proposing a mid-tier value chain.

Who may apply for this program?

Independent producers, agricultural producer groups, farmer- or rancher-cooperatives, and majority-controlled producer-based business ventures, as

defined in the program regulation, are eligible to apply for this program.

How may funds be used?

Grant and matching funds can be used for planning activities or for working capital expenses related to producing and marketing a value-added agricultural product. Examples of planning activities include conducting feasibility studies and developing business plans for processing and marketing the proposed value-added product. Examples of working capital expenses include:

- Processing costs.
- Marketing and advertising expenses.
- Some inventory and salary expenses.

For more information, please visit <https://www.rd.usda.gov/programs-services/value-added-producer-grants/md>.

Matching Grant From MARBIDCO

Up to 15% match for USDA Value Added Producer Grant

Maryland Value Added Producer Matching Grant (MVAPMG – USDA Option) is designed to encourage participation in USDA's highly competitive Value Added Producer Grant Program (which has both planning and working capital components). The USDA VAPG does not award funding for capital equipment purchases, however, Maryland farmers may opt to seek funding for such purchases through MARBIDCO's [Value Added Producer Grant - Capital Assets Option](#) program.

The USDA Value Added Producer Grant Program, is offered annually and requires a non-federal financial matching commitment and each application for the MVAPMG must include a "verification of matching funds."

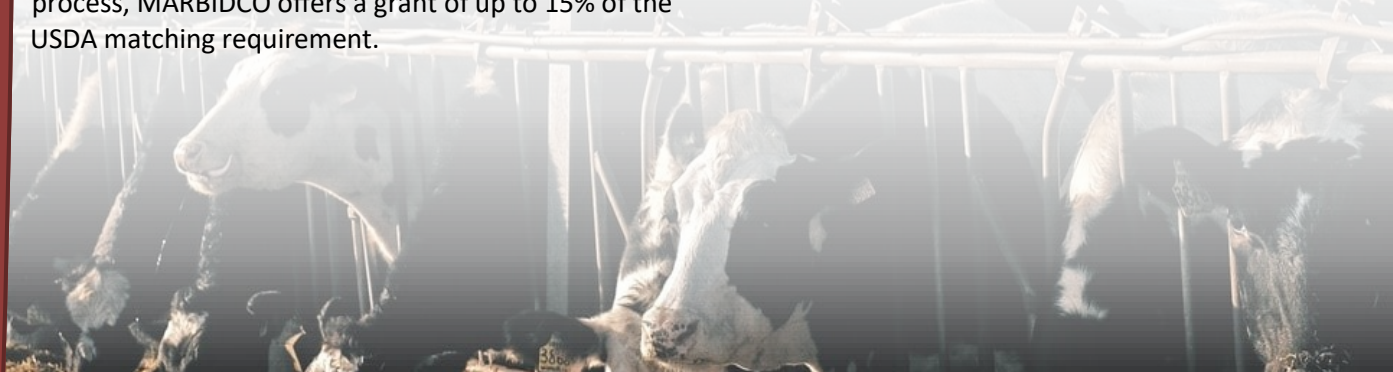
To incentivize Maryland farmers to apply and to increase their competitiveness in the application process, MARBIDCO offers a grant of up to 15% of the USDA matching requirement.

To be eligible to apply to MARBIDCO for funding, an applicant must also be eligible under the USDA VAPG Program, and funds will only be awarded to those who actually receive the USDA VAPG award. To apply to the USDA VAPG program, click [here](#), and to read the definition of value added as defined by USDA, click [here](#). Each applicant that has been approved to receive a MVAPMG will receive a letter for submission to USDA that contains how much matching funding will be available to the applicant.

Maximum Grant Amount: \$11,250 for Planning Grants and \$25,000 for Working Capital Grants.

MARBIDCO 2021 Deadline: March 8, 2021 at 4 p.m., or postmarked by March 4, 2021. USDA deadline is March 22, 2021.

For more information, visit the [MARBIDCO website](#) or call their office at (410) 267-6807.



Additional CFAP Support

Paul Goeringer, Agriculture Law Extension Specialist
University of Maryland, College Park

Reposted from the [Ag Risk Management Blog](#). Article abridged, [click to view entire article](#)

USDA recently announced additional assistance to growers impacted by disruptions due to COVID-19 through the Coronavirus Food Assistance Program (CFAP). The program will make certain contract livestock, including contract poultry growers, and turfgrass sod growers eligible for financial assistance with CFAP 2. Other eligible producers of aquaculture, nursery crops, row crops, specialty crops, specialty livestock, and tobacco who signed up for payments before the original closing date of Dec. 11, 2020, are also now eligible for updated payment calculations for CFAP 2. Swine producers will receive a top-up payment on CFAP 1. Producers will have till **February 26, 2021**, to apply for the assistance, and swine producers will not need to do anything to receive the top-up payment.

Contract Growers: The initial CFAP programs excluded contract livestock and poultry producers, but many had faced market disruptions due to COVID-19 shutting down processing facilities, leading many companies to depopulate livestock and poultry. To be eligible for the additional assistance, contract growers must show they:

1. Have raised broilers, pullets, layers, chicken eggs, turkeys, hogs, or pigs under a contract in 2019 and 2020;
2. Can demonstrate a drop in revenue for the period from January 1, 2020, through December 27, 2020, as compared with the period from January 1, 2019, through December 27, 2019; and
3. Can provide a copy of the contract.

For example, a contract poultry grower had revenue in 2019 of \$90,000, but \$70,000 for the same period in 2020. Under the CFAP 2, the contract poultry grower would be eligible for a payment of \$16,000, or \$90,000 minus \$70,000 equals \$20,000 times 80 percent.

Turfgrass Sod: Turfgrass sod growers are now eligible for assistance through CFAP. Eligible turfgrass sod growers will receive a payment based on:

1. The amount of the producer's eligible sales in the calendar year 2019, plus crop insurance indemnities, Noninsured Crop Disaster Assistance Program (NAP), and Wildfire and Hurricane Indemnity Program Plus (WHIP+) payments received for the crop year 2019, multiplied by the payment rate for that range in Appendix 1.

For example, if a turfgrass sod grower had eligible sales, including other allowed payments in 2019 of \$55,000, the grower would receive a CFAP payment of \$5,445, or \$55,000 times 9.9 percent.

Aquaculture, Nursery and Floriculture, Specialty Crops, and Specialty Livestock: Farm Service Agency (FSA) updated the payment calculations for aquaculture, nursery crops, floriculture, specialty crops, specialty livestock, and tobacco. Payment calculations for each of these will now include crop insurance indemnities and Noninsured Crop Disaster Assistance Program (NAP) payments. For nursery crops, floriculture, specialty crops, specialty livestock, and tobacco, payment calculation will include payments from the Wildfire and Hurricane Indemnity Program Plus (WHIP+). CFAP payments will now be calculated on 2019 eligible sales, NAP payments, crop insurance indemnities, and WHIP+ payments (if applicable) multiplied by the payment rate in Appendix 1.

Row Crops: FSA has also updated the payment calculator for producers growing barley, corn, sorghum, soybeans, sunflowers, upland cotton, and wheat to include those who had crop insurance coverage but did not have an available 2020 Actual Production History approved yield. FSA will now use 100 percent of the 2019 Agriculture Risk Coverage-County Option benchmarked yield for those producers.

Swine Producers: Swine producers with approved CFAP 1 applications will receive a top-up payment of \$17 per head to cover an additional 25 percent of the estimated total economic loss. This top-up payment is to fix the large difference between the first quarter sales loss rates and the CFAP 1 inventory payment rates for swine. Those with approved CFAP 1 applications will need to do nothing to receive this payment. Those without approved CFAP 1 applications for swine will not be eligible.

Signup: FSA will accept new or modified applications for CFAP from January 19 to **February 26, 2021**. Signup can take place online or by making an appointment with your local FSA Office. You can get more details on the program at www.farmers.gov/cfap.

Shannon Dill, Principal Agriculture Agent
University of Maryland Extension, Talbot County

The University of Maryland Extension has updated www.extension.umd.edu/grainmarketing website with new input data and spray programs for the 2021 field crop budgets. This site also has the new custom rate survey and 2020 cash rental rates.

Crop Budgets

Cost of production is very important when making decisions related to your farm enterprise and grain marketing. Enterprise budgets provide valuable information regarding individual enterprises on the farm. This tool enables farm managers to make decisions regarding enterprises and plan for the coming production year. An enterprise budget uses farm revenue, variable cost, fixed cost and net income to provide a clear picture of the financial health of each farm enterprise.

The 2021 Maryland enterprise budgets were developed using average yields and estimated input cost based upon producer and farm supplier data. The figures presented are averages and vary greatly from one farm and region to the other. It is therefore crucial to input actual farm data when completing enterprise budgets for your farm.

The budgets are available electronically in PDF or Excel online at <https://extension.umd.edu/grainmarketing/crop-budgets>. Use this document as a start or reference to create your crop budgets. If you have problems downloading any of these budgets, contact information is located on the website.

Custom Rate Survey for 2021

A mail survey was conducted in the fall of 2020 to determine custom works charges in Maryland. Rates were received from 55 custom operators and farmers, and summarized for the state. Respondents indicated the rates they charge for various field operations. The charges reported in this publication may serve as a guide in determining an acceptable rate for a particular job where other information is unavailable. Reported rates include charges for machines, power, fuel, lube and the labor/operator. These rates do not include the costs of chemicals, seeds, and other materials with the exception of hay baling materials and where noted (i.e. spreading lime). Visit <https://extension.umd.edu/grainmarketing/custom-rates-0> for more information.

Cash Rental Rates for 2020

Cash rent lease agreements are the most popular type of lease agreement in Maryland. Cash rent is a fixed amount on a per acre basis. In this agreement the owner is relieved of operating and marketing decisions and income is known year to year. The tenant has the risk and returns from the crop and can make crop and livestock decisions.

The USDA, National Agriculture Statistics Service (NASS) provides the county data in response to requests from customers as well as a requirement of the Farm Bill. Estimates of average cash rental rates per acre for irrigated cropland, non-irrigated cropland and pastureland are published at the County, District and State level where possible. This is based on responses to annual farm level surveys. More information available at: <https://extension.umd.edu/grainmarketing/lease-agreements>.

Cost Per Acre 2021

	Corn No Till	Corn Conventional	Soybeans	Wheat	Wheat/Beans
2021	\$540	\$592	\$346	\$401	\$608
Increase	0%	0%	0%	-6%	-4%



ROOTED IN AGRICULTURE

A FREE virtual event for everyone!



Saturday, March 20, 2021
9 a.m. - Noon

Livestreaming from The Grove
at Harford County's Agricultural Center

Special Guest Hosts:

Steve Rouse, farmer & former local radio personality
Sarah Sampson, producer, Maryland Public Television

Register here

<https://bit.ly/35cZvLt>

Watch it here:

Youtube: HarfordCountyMD

Facebook: @HarfordCountyMD

Program Highlights

- A Native American Blessing
- Harford County - Birthplace of Sustainable Agriculture
- It's Not Just Dirt - Soil Pit Demo
- Hydroponics - Farming without Soil
- Community Gardening Trends
- Healthy Cooking Demo with Local Farm Products
- Ask a Farmer - Live Q&A

Ag-Venture - Activities for Kids of All Ages!
Register to Win Prizes!

PRODUCED BY SYMPATICO



MAJOR SPONSORS



Great resources are just a click away!

Andrew Kness

Andrew Kness
Extension Agent,
Agriculture and
Natural Resources



Like us on
Facebook

facebook.com/HarfordAg

akness@umd.edu

[Extension.umd.edu/Harford-county](https://extension.umd.edu/Harford-county)



Back-issues of this publication can be found at: <https://extension.umd.edu/news/newsletters/657>

UNIVERSITY OF
MARYLAND
EXTENSION
Suite 600
3525 Conowingo Rd.
Street, MD 21154

Ag Notes

Harford County Newsletter

Dates to remember

02 Feb-09 Mar. [Advanced GAP Training Series](#). Virtual, 7-8:00 AM.
Free. Register [online](#).

04 Feb-08 Apr. [Beginning Farmer Series](#). Virtual event. \$40.
Register [online](#) or contact Neith Little (410) 856-1850.

08-11 Feb. Mid-Atlantic Fruit & Vegetable Convention. Virtual
conference. Registration: www.mafvc.org.

10 Feb. [Women in Ag Webinar: Cover Crop Mixes](#). 12 noon. Free.
Register [online](#).

15 Feb. [Virtual Basic GAP Training](#). 8-noon. Free. Register [online](#).








16-18 Feb. Pesticide Applicator Exams. 8:30-11:30 AM. MDA in
Annapolis. Register [online](#).

24 Feb. [Women in Ag Webinar: Planning for Retirement](#). 12 noon.
Free. Register [online](#).

01 Mar. Nutrient Management AIR due to MDA. Questions call
Darren Alles, (410) 991-3114.

11 Mar. Private Pesticide Applicator Exam. 8:30-11:30 AM.
Baltimore County Ag Center, Cockeysville, MD. Free. Study
materials \$20. Register [online](#) or by calling the Extension office.

Check out these additional online resources from

	Maryland Grain		Ag Law Initiative
	Agronomy News Blog		Women in Ag
	Nutrient Management		Plant Diagnostic Lab
		Extension Website	

February 2021