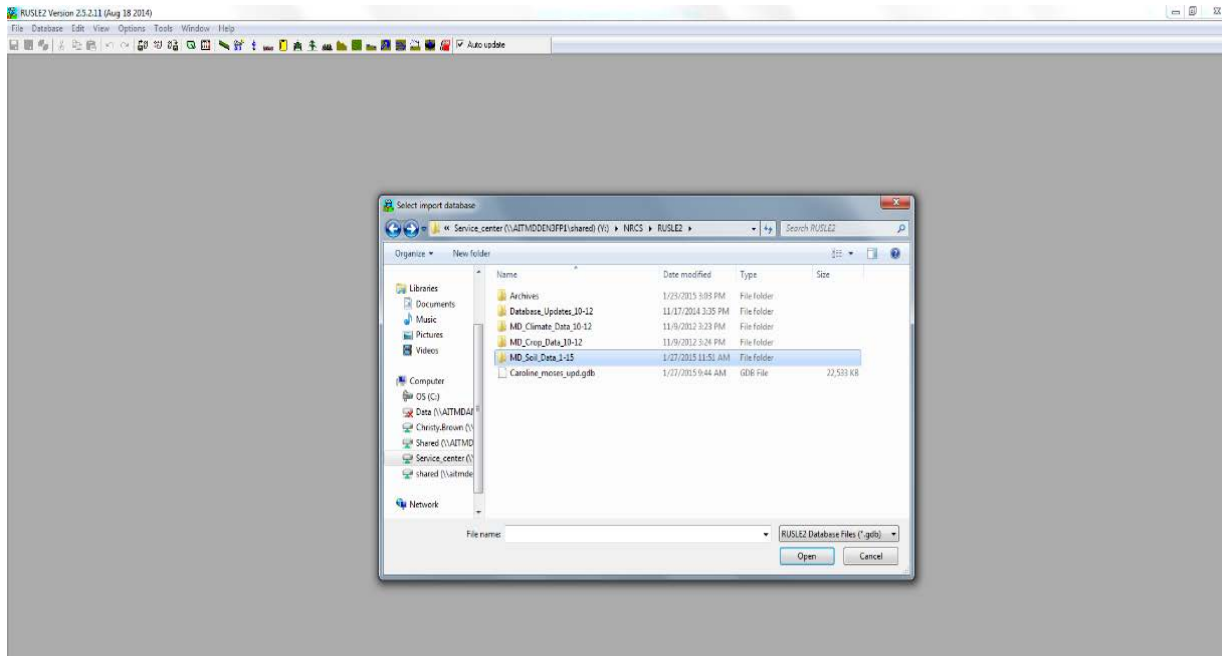




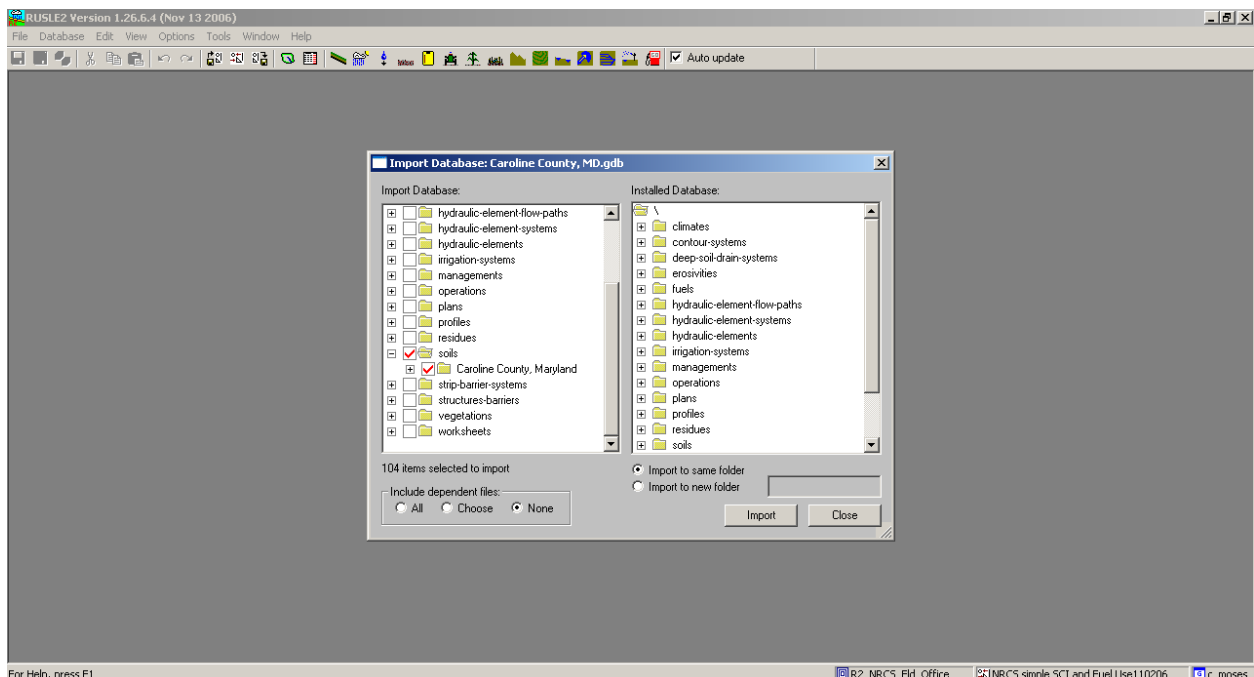
RUSLE2 Soils Data Update

The following steps will help you to update soils data files. The soils have already been saved on each county's shared drive at NRCS\RUSLE2\MD_Soil_Date_1-15

Open RUSLE2 program, click on Database, and Import RUSLE2 database. Navigate to the "S" drive (S:SERVICE_CENTER\NRCS\RUSLE2\MD_SOIL_DATA_1-15), choose the county soils and click open.

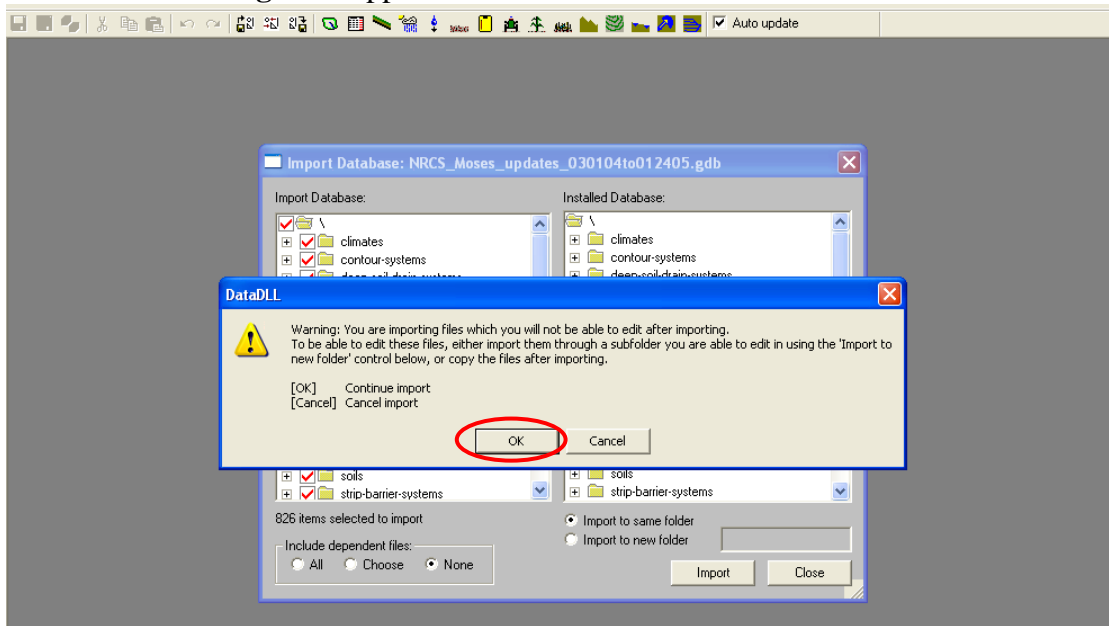


The database menu box will appear. Click on the soils folder and the county folder that you are going to import. Make sure **None** is selected under "Include dependent files" and **Import to same folder** is selected. Click Import.

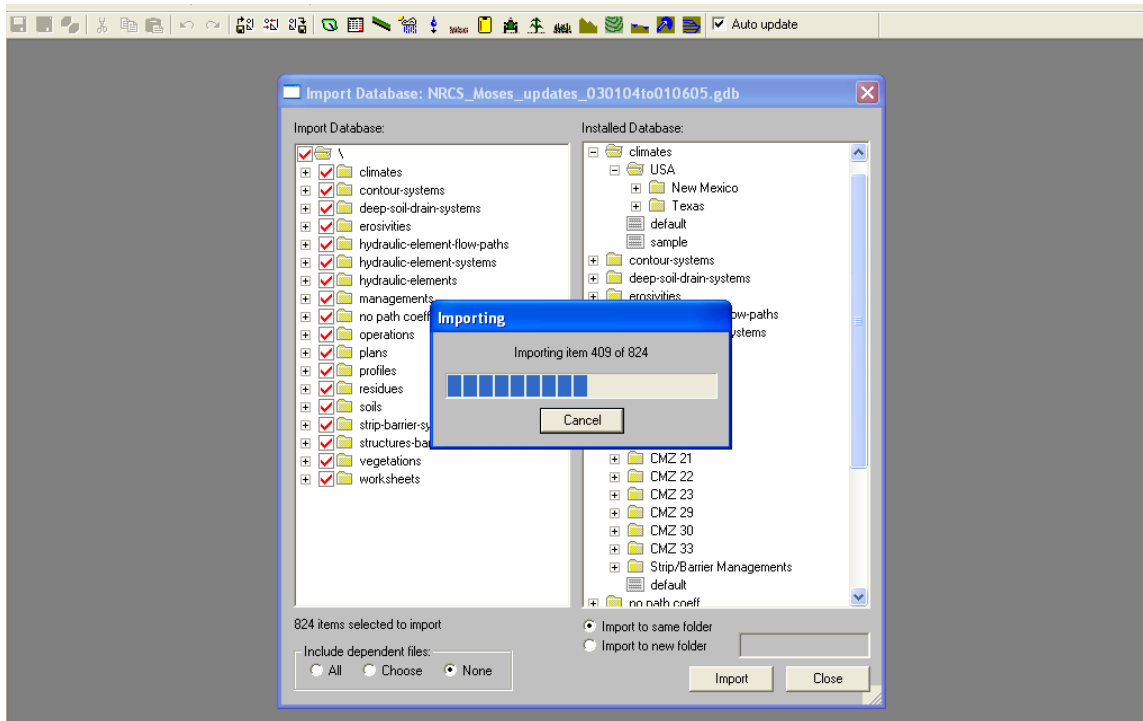


RUSLE2 Soils Data Update

When the “Warning” box appears click **OK**



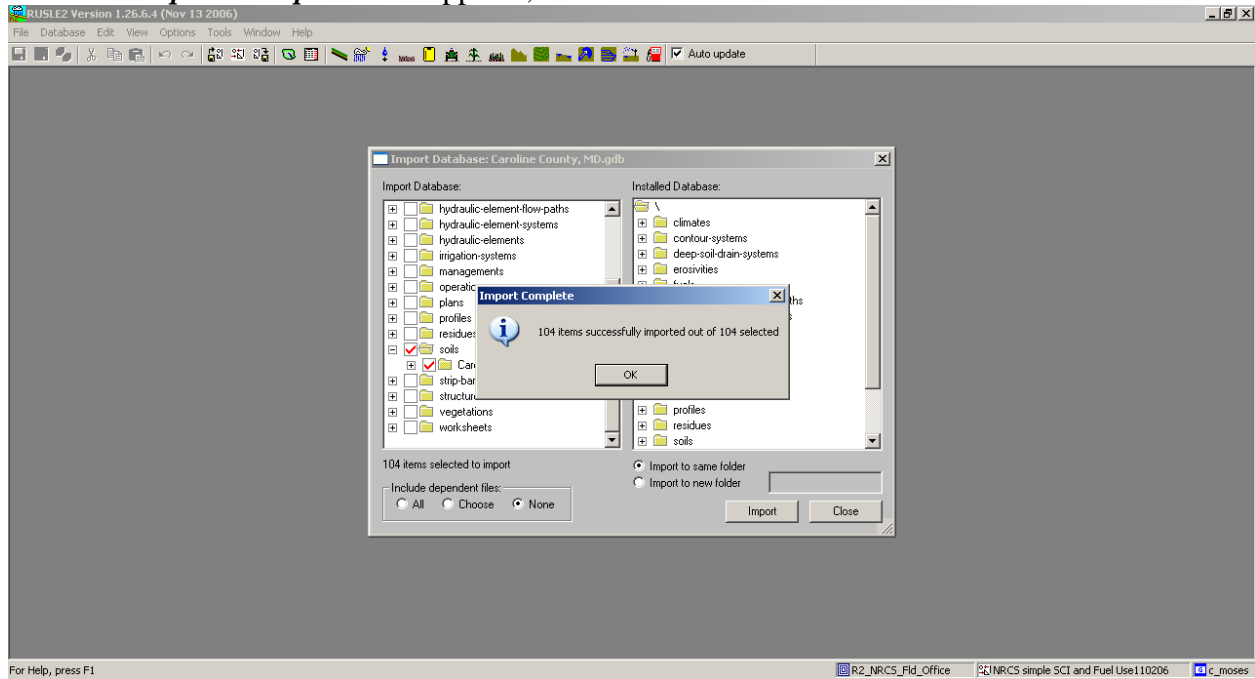
Let the import process run its course. This may take a few seconds. Do not click the mouse or click cancel.



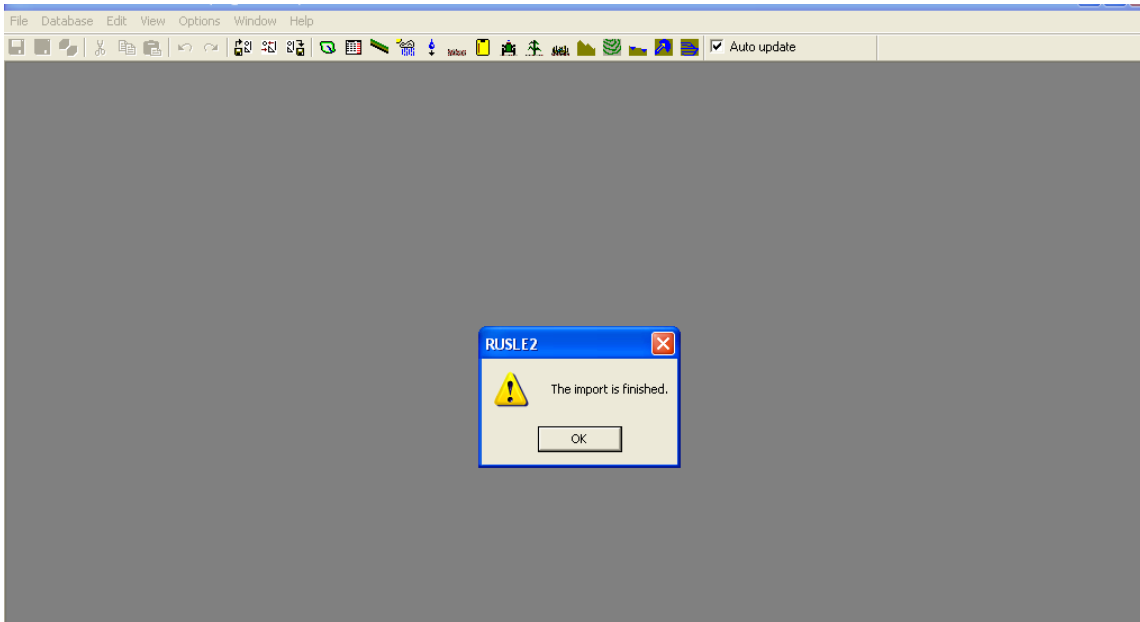


RUSLE2 Soils Data Update

When the *Import Complete* Box appears, click **OK**.



Click “OK” to acknowledge the import is complete and to close the import process.



You are now finished and can resume using RUSLE2 with your updated soils data.